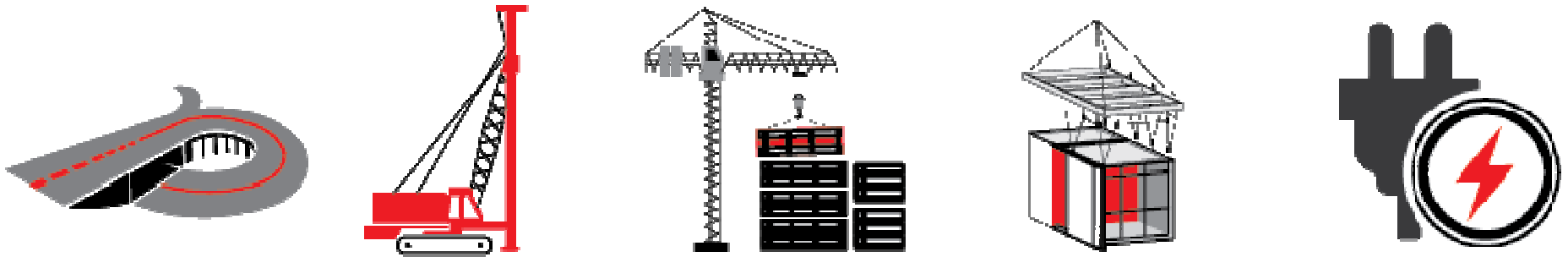


# ***SUNWAY***<sup>®</sup>

## **CONSTRUCTION**



**5<sup>TH</sup> ANNUAL GENERAL MEETING**

**19 June 2019**

# 2018 Highlights

## Track Record since listing

<b>RM'000</b>	<b>31 Dec 2018 (Audited)</b>	<b>31 Dec 2017 (Restated)</b>	<b>31 Dec 2016 (Audited)</b>	<b>31 Dec 2015 (Audited)</b>
Revenue	<b>2,256,835</b>	2,076,290	1,788,844	1,916,859
Profit before tax	<b>183,066</b>	168,660	153,677	140,750
Profit after tax and minority interest	<b>144,681</b>	132,296	123,519	127,164
Dividend per share (Sen)	<b>7</b>	7	5	4
Outstanding Order Book	<b>5,219,458</b>	6,135,143	4,779,588	3,778,457
New Order Book secured	<b>1,552,847</b>	3,956,689	2,656,162	2,601,378
Average ROCE	<b>43%</b>	47%	57%	52%

# Solid Order Book of Diversified Projects

As at Mar 2019 (RM mil)	Completion	Contract Sum	O/S Orderbook	
<b>Building</b>			1,045	18%
Putrajaya Parcel F	1Q 2019	1,610	69	
PPA1M Kota Bharu	1Q 2020	582	141	
Nippon Express	4Q 2019	70	48	
GDC (Plant 2)	3Q 2019	14	6	
<b>TNB HQ Campus (Ph 2)</b>	<b>2Q 2021</b>	<b>781</b>	<b>781</b>	
<b>Infrastructure/Piling</b>			2,348	41%
MRT V201 + S201	2Q 2021	1,213	359	
LRT 3 : Package GS07-08	2Q 2021	2,178	1,929	
Piling works	Various	128	61	
<b>Piling works - Y19</b>	<b>Various</b>	<b>99</b>	<b>99</b>	
<b>Internal</b>			1,923	34%
Velocity Medical Centre	2Q 2019	185	10	
SMC 4	4Q 2019	512	429	
Emerald Residences	4Q 2018	175	8	
Big Box - Iskandar	4Q 2019	170	45	
Sunway Serene	4Q 2020	449	306	
Velo 2	4Q 2021	352	343	
Velocity 3C4	2Q 2021	100	96	
Sunway GEOLake	1Q 2021	223	161	
Carnival Mall Ext	4Q 2020	286	247	
SMC Seberang Jaya	4Q 2020	180	163	
Velocity Ecodeck	4Q 2018	11	9	
M&E works	4Q 2018	27	6	
<b>Big Box Hotel</b>	<b>3Q 2020</b>	<b>100</b>	<b>100</b>	
<b>Singapore</b>			316	6%
Precast	Various	331	285	
<b>New Order 2019</b>	<b>Various</b>	<b>31</b>	<b>31</b>	
<b>Grand Total</b>		<b>9,805</b>	<b>5,731</b>	

# Awards & Accolades in FYE 2018

## **44<sup>th</sup> International Federation of Asian and Western Pacific Contractors' Association ("IFAWPCA")**

- IFAWPCA Builders Award – Building - Silver Medal (Kuala Lumpur Convention Centre)
- IFAWPCA Builders Award – Civil Engineering – Silver Medal (BRT Sunway Line)
- YTL IFAWPCA Award for Excellence : Datuk Kwan Foh Kwai (Present Advisor)

## **Construction Industry Development Board (5-Star SCORE Rating)**

- Sunway Construction Sdn. Bhd.
- Sunway Engineering Sdn. Bhd.

## **FTSE4Good Index Series Award**

- SunCon was first included in the index in 2015, meeting the inclusion criteria for demonstrating Environmental, Social and Governance (ESG) practice
- SunCon continues to remain as a constituent of FTSE4Good Bursa Malaysia Index series following the review in June 2018

## **ACCA Malaysia Sustainability Reporting Awards (MASRA) 2017**

- SunCon is a proud winner for the Commendation Awards in the category of Knowledge Management.



# Completed Projects in 2018

**SUNWAY®**  
CONSTRUCTION



International School of Kuala Lumpur



# Completed Projects in 2018

**SUNWAY®**  
CONSTRUCTION

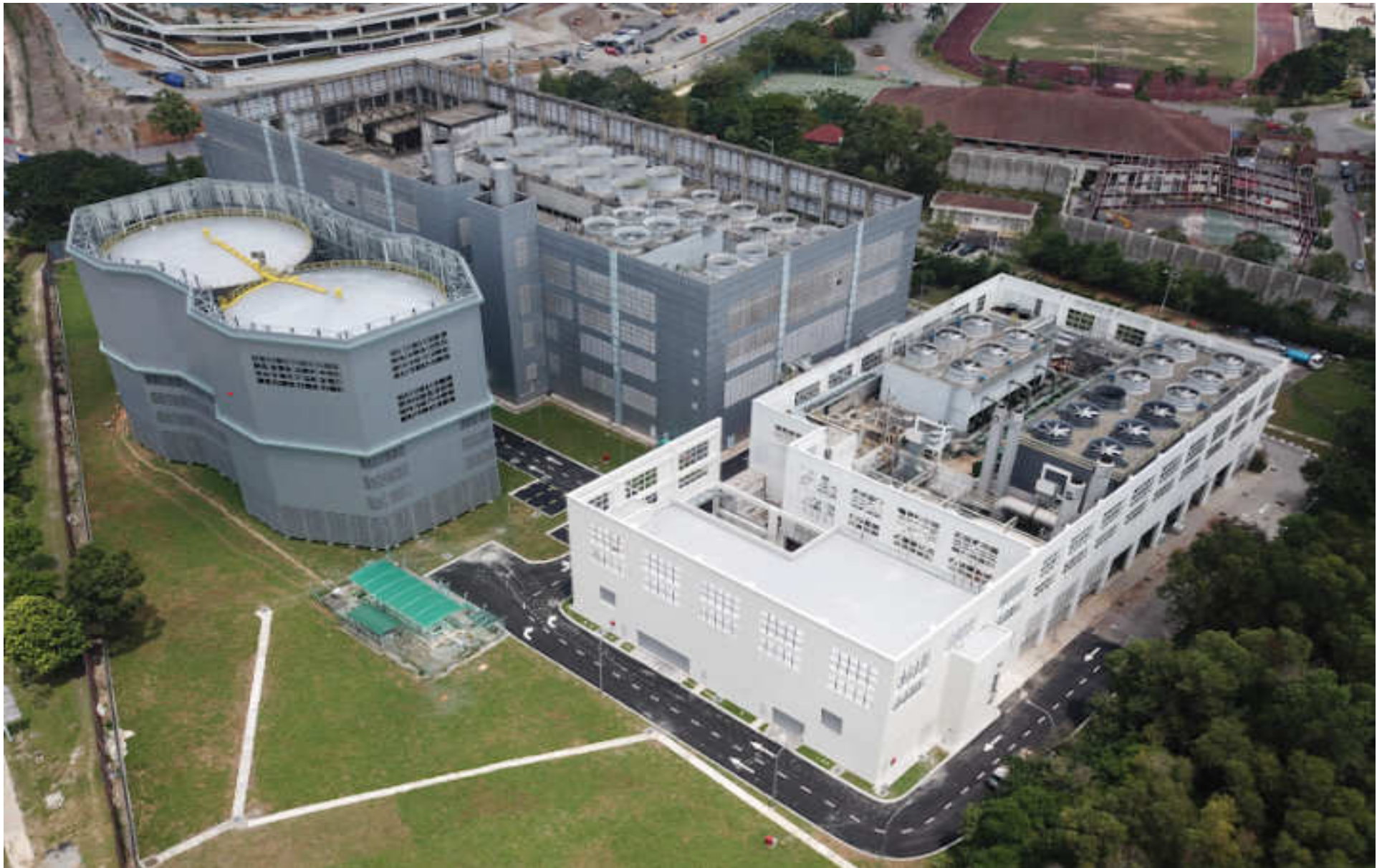


Sunway Emerald Boulevard 88, Sunway Iskandar



# Completed Projects in 2018

**SUNWAY®**  
CONSTRUCTION



Gas District Cooling Plant, Putrajaya



# Completed Projects in 2018

**SUNWAY®**  
CONSTRUCTION



Emerald Residence, Sunway Iskandar

# **PROSPECTS 2019 and Beyond**

## **Opportunities within Malaysia**

# Malaysia : In-House Projects - Healthcare



## Present

- 1) Sunway Velocity Medical Centre (SVMC) will be open in 2H 2019 (240 beds);
- 2) Sunway Medical Centre Seberang Jaya, Penang will be open in 2021 (180 beds);
- 3) Bandar Sunway : Phase 4 (618 beds to >1,000 beds);

## Future

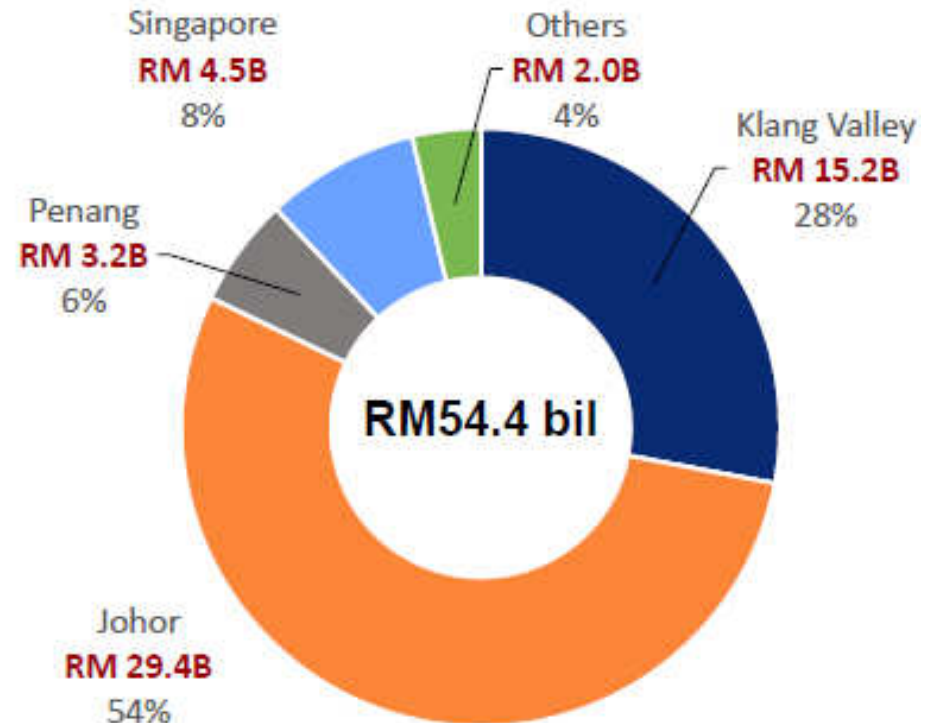
- 4) Sunway Damansara : To be advised (250 beds)
- 5) Sunway City Ipoh : To be advised (200 beds)
- 6) Sunway Iskandar : To be advised



# Malaysia : In-House - Balance Land Bank

## Remaining Landbank

Total Landbank	• 3,283 acres
Total GDV	• RM54.4 billion
Effective GDV	• RM36.8 billion
Development Period	• Up to 15 years



### Klang Valley

816 acres (25%)  
RM 15.2 bil (28%)



### Johor

1,787 acres (54%)  
RM 29.4 bil (54%)



### Penang

186 acres (6%)  
RM 3.2 bil (6%)



### Singapore

13 acres  
RM 4.5 bil (8%)



### Others

482 acres (15%)  
RM 2.0 bil (4%)

# Malaysia : External - Infrastructure



Penang Transport Master Plan – 46 billion

# Malaysia : External - Infrastructure



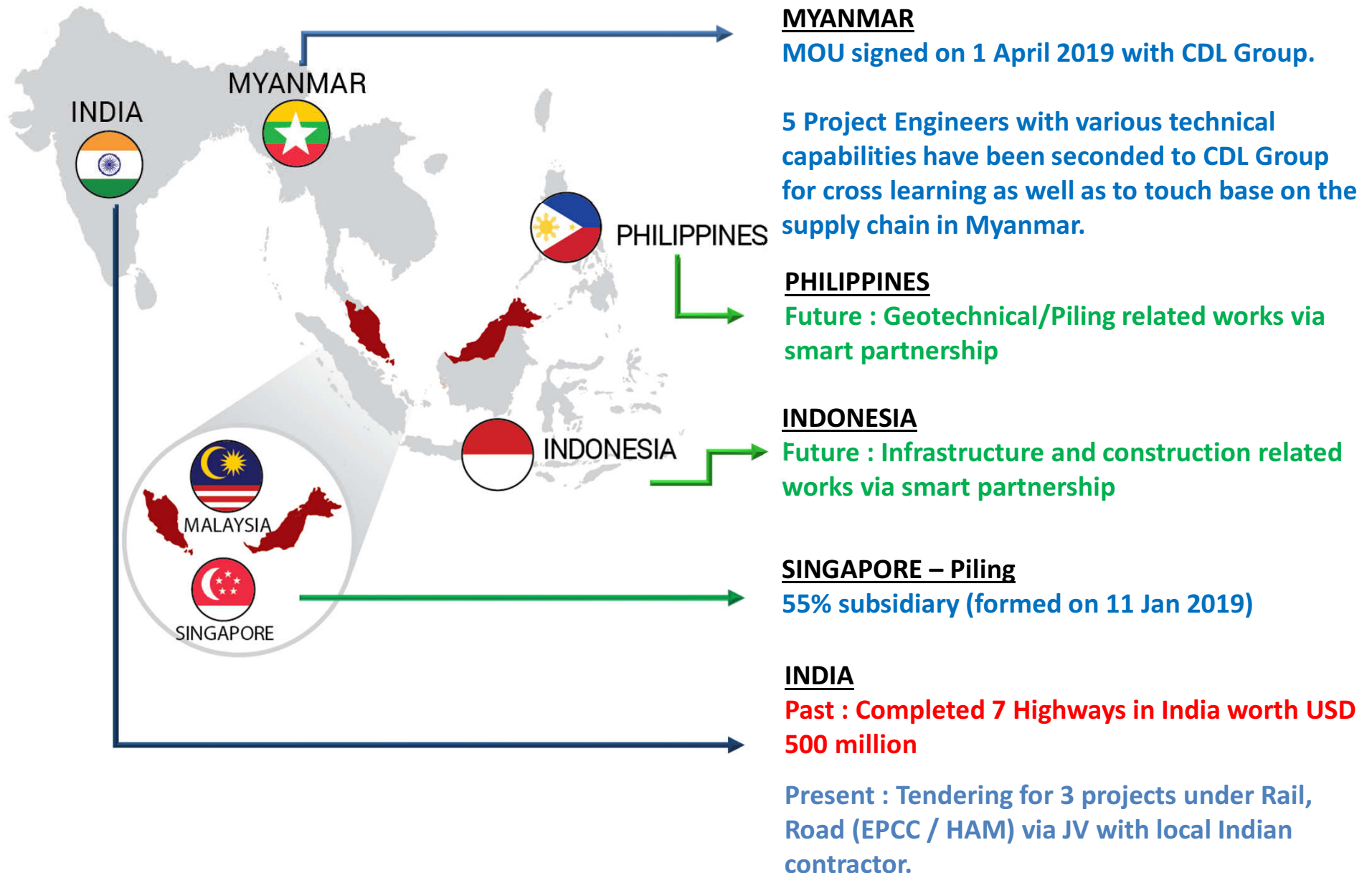
Source: Malaysia Rail Link Sdn Bhd



# **PROSPECTS 2019 and Beyond**

## **Expansion Plans**

# Expansion Plans – ASEAN and INDIA



# Precast Concrete Products

## Integrated Construction Prefabrication Hub (ICPH)

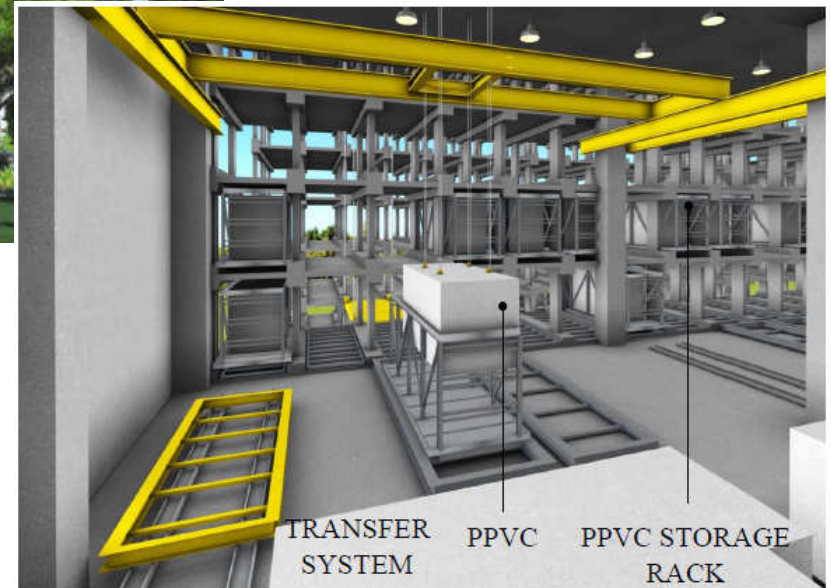


*Automated Storage Retrieval System (ASRS)*

**Investment Cost : S\$80 million**

**Operational : July 2021**

**Capacity : > 100,000 m<sup>3</sup>**





# Precast Concrete Products

**SUNWAY®**  
CONSTRUCTION

## Prefabricated Prefinished Volumetric Construction (PPVC)

*Mould and Reinforcements*



*On trailer to be transported to site*



# Precast Concrete Products

**SUNWAY®**  
CONSTRUCTION

## Prefabricated Prefinished Volumetric Construction (PPVC)

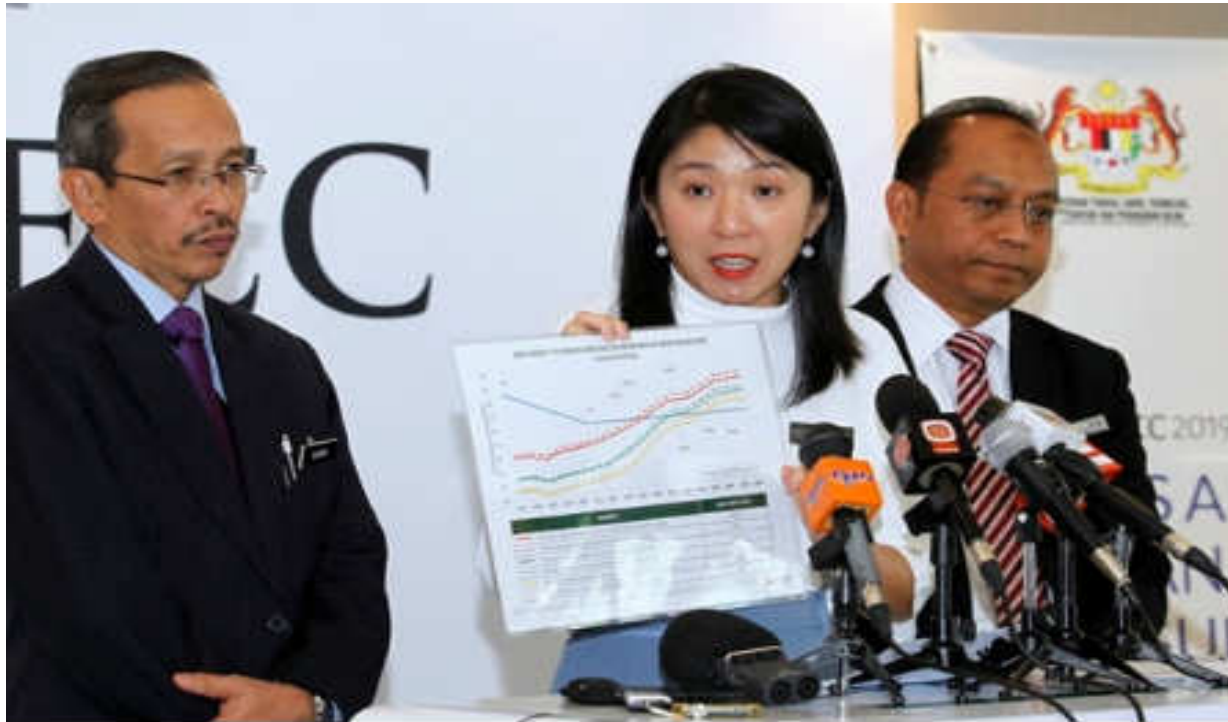
*PPVC modules with completed tiles*



# Mechanical, Electrical and Plumbing (MEP) **SUNWAY®** CONSTRUCTION

## Renewable Energy

Future : Engineering, Procurement, Construction and Commissioning (EPCC) opportunities for Large Scale Solar 3 (LSS 3) in Malaysia and ASEAN region



**PUTRAJAYA:** The tender for the development of the RM2 billion Large Scale Solar 3 (LSS3) scheme projects will be opened from Feb 27 to Aug 19.

Energy, Technology, Science, Climate Change and Environment Minister Yeo Bee Yin said the 500 megawatt (MW) capacity LSS3 scheme would be offered through open competitive bidding in order to provide the best tariff rates for the benefit of the people.



# Talent Management

## Capability and Development

# Workforce Capability and Development

Our focus in enhancing **Technical / Functional Capability** of our employees...

**Project & Construction  
Management, Workforce  
Accreditation & Competent  
Personnel Certification**



Virtual Design Construction (VDC)

via:

- Planning management
- Design management
- Technical & Coordination management

- Project Implementation
- Quality & Safety Management
- Contractual & Cost Management
- Risk Management
- HR Management
- Competent Personnel & Trade

- Integration of design, planning, cost & facilities management via technology
- Focuses on next gen project management through BIM
- Reduces project time cycle & enhances project implementation



**Productive • Safe • Quality**  
**Work Culture**

# Workforce Capability and Development

Our purpose is building a culture of **learning & growth**

## Safety



## Scaffold





# Workforce Capability and Development

Our purpose is building a culture of **learning & growth**

**Plastering**



**Brick-layering**



# Workforce Capability and Development



Our purpose is building a culture of **learning & growth**

**Virtual Design and Construction (VDC) Training @ Greece**





**- THANK YOU -**



*This presentation may contain certain forward looking statements due to a number of risks, uncertainties and assumptions. Representative examples of these factors include (without limitation) general industry and economic conditions; interest rate trends; cost of capital and capital availability including availability of financing in the amounts and the terms necessary to support future business; competition from other companies, changes in operating expenses including employee wages, benefits, government and public policy changes. You are cautioned not to place undue reliance on these forward looking statements which are based on Management's current view of future events. Past performance is not necessarily indicative of its future performance*